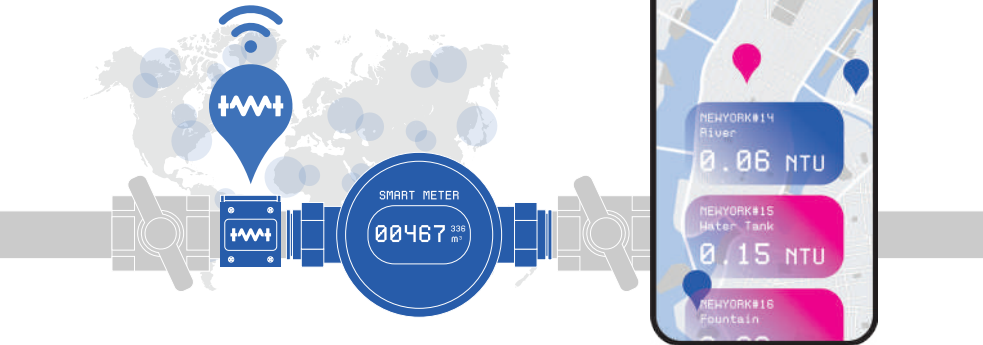


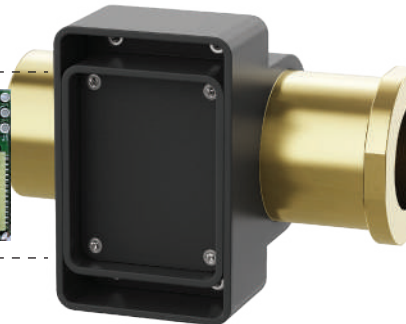
Real-Time Drinking Water Quality Monitoring for Smart Water Meter



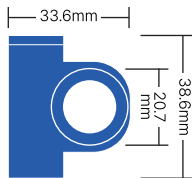
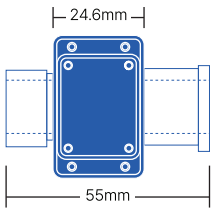
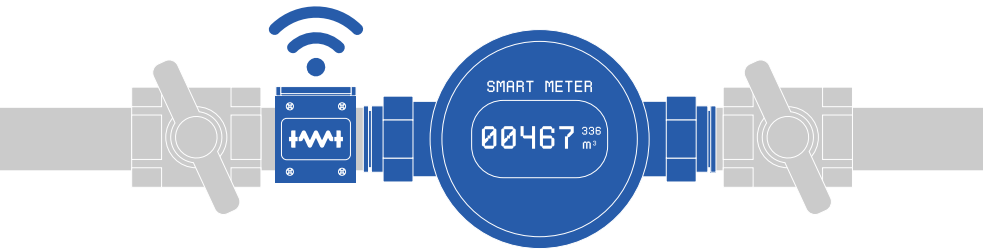
No Calibration for 10 Years
Low Power Consumption
Ultra Small Size

This is actual size!

Full
Catalog

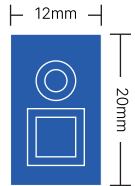


Detailed specifications are on the back >



PipeTalk™ Sensor Board

*실제 크기입니다.



Specification	Details
Measurement Range	0.02 ~ 30.0NTU
Accuracy	Premium $\pm 0.05\text{NTU}$ or $\pm 2\%$, Whichever is greater
	Standard $\pm 0.1\text{NTU}$ or $\pm 2\%$, Whichever is greater
Life Cycle	800,000 times, 15 years @ a measurement every 10 minutes
Measurement method	After stopping the flow rate
Operating Power	Add-on 3.3 VDC $\pm 5\%$, 0.1A, 0.33W
	Clamp 5 VDC $\pm 5\%$, 0.1A, 0.5W
Operating Power	Add-on 0.00057Wh/1time
	Clamp 0.00065Wh/1time
Data Input / Output	Add-on : UART / Clamp : Analog Output 4-20



Lensless Deep Learning Sensor
for Real-time Water Monitoring

www.thewavetalk.com
thewavetalk@thewavetalk.com